


 Bundesanstalt für
Landwirtschaft und Ernährung

**The Innovation Support programme organized
by the Federal Office for Agriculture and Food
in Germany**



Monika Fischer
Bundesanstalt für Landwirtschaft und Ernährung
Deichmanns Aue 29
53179 Bonn
phone: +49 (0)228 / 99 68 45-3591
fax: +49 (0)228 / 68 45-3318
email: monika.fischer@ble.de

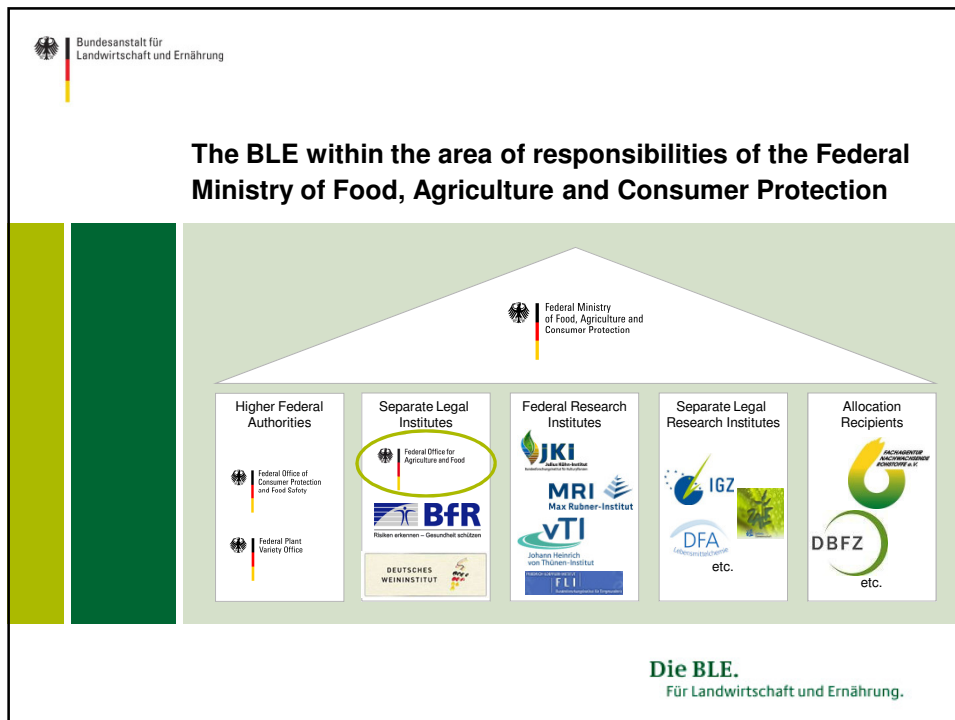
Die BLE.
Für Landwirtschaft und Ernährung.

 Bundesanstalt für
Landwirtschaft und Ernährung

**BLE - The Federal Office
for Agriculture and Food:**

Service authority and control entity

Die BLE.
Für Landwirtschaft und Ernährung.



Bundesanstalt für Landwirtschaft und Ernährung

Die BLE. An overview of the variety of tasks

Stability For common EU markets <ul style="list-style-type: none">• Intervention• Private storage• Import/export	Protection For consumers <ul style="list-style-type: none">• Quality inspection• Product labelling• Food provision and security	Development For a common future <ul style="list-style-type: none">• Research sponsoring• Rural development• Renewable energies
Protection For sustainability <ul style="list-style-type: none">• Fishery protection• Genetic resources• Sustainable Biomass	Service For the ministry and others <ul style="list-style-type: none">• IT solutions• Statistics• Event organisation• Administration service	Education For common EU markets <ul style="list-style-type: none">• IN FORM• Bio label, organic farming• Biodiversity

Die BLE.
Für Landwirtschaft und Ernährung.

Bundesanstalt für Landwirtschaft und Ernährung

Some special logos... national programs

Die BLE.
Für Landwirtschaft und Ernährung.

Innovation Support Programme: Aims

- The enhancement of the competitive ability and economic innovation strength in Germany as a location for business and industry
- Strengthening the economic power of innovation
- To generate and maintain jobs
- Protection of natural resources
- Improvement of working conditions

Die BLE.
Für Landwirtschaft und Ernährung.

Innovation Support programme: Terms I

- Budget: 28,5 million Euro in 2011
(it is planned to increase the budget up to 38 million Euro in the next years)
- Companies can apply for grants up to 50% for industrial research and 25% for experimental research
- Small companies get an allowance of 20% and medium sized companies 10% in addition
- SMEs can also apply for grants up to 75% for studies in preparation of industrial research and 50% for studies in preparation of experimental development. For large companies this is 65% and 40%

Die BLE.
Für Landwirtschaft und Ernährung.

Innovation Support programme: Terms II

- Provided grants after the first call:
 - Since 2006: more than 193 projects and collaborations (540 sub projects) with a total value of 118,5 million Euro (87,7 million Euro funding)
- Applicants: Individual companies or in collaboration with a research institution
- Funding range between 100.000 Euro and 2 million Euro per project
- Irregular application cycle, only after calls published in the Federal Gazette
- Duration of projects: 3 years (average)

Die BLE.
Für Landwirtschaft und Ernährung.

Description of the target group

- The program includes support of:
 - Research, development and demonstration projects, aimed at marketing of innovative technical and non-technical products
 - Strengthening capacity for innovation (including the transfer of knowledge)
 - Studies of the social- and legal environment for innovation and identifying future areas of innovation

Die BLE.
Für Landwirtschaft und Ernährung.

Innovations Support programme: Objectives

- Prerequisites for innovations
- Plant breeding and plant protection
- Animal breeding and husbandry
- Ecofriendly land management
- Safety and quality of food
- Health and consumer protection

Die BLE.
Für Landwirtschaft und Ernährung.

Further informations:

- www.ble.de/innovationsfoerderung „Programm des BMELV“
- http://www.bmelv.de/DE/Ministerium/ForschungInnovation/forschung_node.html



Die BLE.
Für Landwirtschaft und Ernährung.



Thank you!

Die BLE.
Für Landwirtschaft und Ernährung.